



Convactor grille

Material

- Made from aluminium sections: AlMgSi 0.5 (according to EN 12020-2)
- Finishing: anodised in satin colour (20 microns) or powder-coated in any RAL or Syntha PulvinR colour (40 microns)
- The frame is lined with a rubber gasket to guarantee a reduced noise level

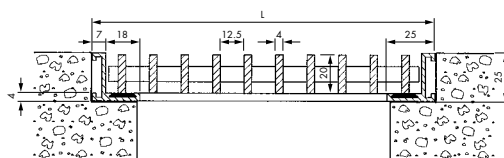
Dimensions

- Bar spacing: 12.5 mm
- Grille section: 20 x 4 mm
- Maximum dimensions:
 - Frame length: 3500 mm
 - Louvre length in pieces of ± 1000 mm
 - Max length per louvre: 1400 mm
 - Width of frame: 1200 mm
- Effective opening = length and width - 50 mm
- Bars arranged crosswise

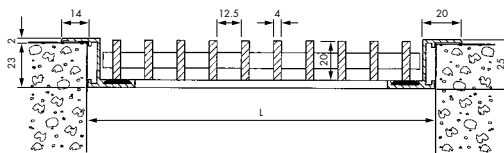
Fixing

- Brackets ref. 231

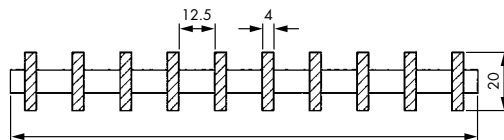
Cross-sections



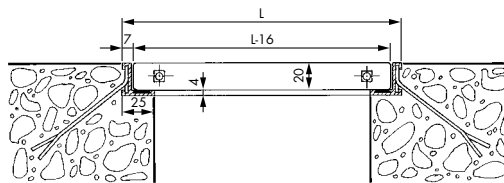
- 311/1: Floor grille or convactor cover with flangeless "L" frame



- 311/2: Floor grille or convactor cover with flanged "Z" frame



- 311/3: Frameless floor grille or convactor cover



Technical specifications

	311
Technical data	
Visual free area	76 %
Physical free area	76 %