

392 < Linear bar grilles



Linear bar grille

Material

- Made from aluminium sections: AlMgSi 0.5 (according to EN 12020-2)
- Finishing: anodized in satin/bronze colour (20 micron) or powder-coated in any RAL or Syntha Pulvin colour (40 micron)

Dimensions

- Bar spacing: 10 mm
- Grille section: 16 x 3 mm
- Maximum dimensions:
 - Frame length: 3500 mm
 - Louvre length in pieces of ± 1600 mm
 - Width of frame: 300 mm
- Effective opening = length and width - 50 mm
- Deflection: 15°
- Bars arranged lengthwise

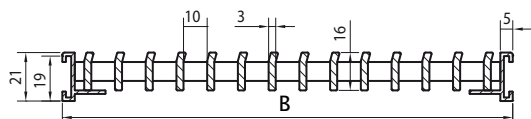
Fixing

- No fasteners

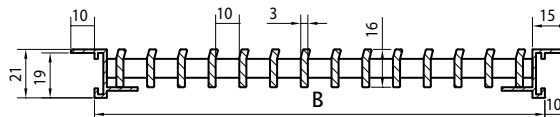
Typical applications

- Radiator frame

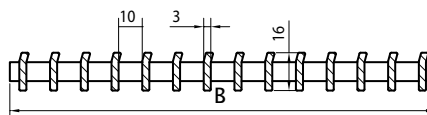
Cross-sections



- 392/1: Linear bar grille without flanged "Z" frame



- 392/2: Linear bar grille with flanged "Z" frame



- 392/3: Frameless linear bar grille

Technical specifications

| Technical specifications | |
|--------------------------|------------|
| | 392 |
| Technical data | |
| Visual free area | 76 % |
| Physical free area | 76 % |

Remark: Not designed to walk on!